

THE ACCESSIBLE, CONCEALED AND INNOVATIVE SAFE FOR THE KITCHEN



The EverydaySafe™



Chubbsafes
Trusted the world over.



INTRODUCING THE EVERYDAYSAFE™	3
EVERYTHING YOU NEED TO KNOW ABOUT THE EVERYDAYSAFE™	4
VISITING SASHA & ROBERT	6
FEATURES & FUNCTIONS	9
FARADAY SHIELD	10
BENEFITS OF SELLING THE EVERYDAYSAFE™	12
BENEFITS OF OWNING THE EVERYDAYSAFE™	14
INSTALLATION	16
PACKAGING AND TRANSPORT	18
PRODUCT SPECIFICATIONS	19

ABOUT CHUBBSAFES – A HISTORY OF PRODUCING EXCELLENCE

Trusted the world over, Chubbsafes solutions have been providing protection around the world for people, cash and valuables for almost 200 years. Originating in the UK in 1835, today the brand is globally available in different markets.

Chubbsafes is part of Gunnebo, a global provider of leading safe storage, entrance control and integrated security solutions – operating at the forefront of innovation and technology. Gunnebo is headquartered in Gothenburg, has a presence in 25+ country location and engages 3800 employees worldwide.

Securing valuables and important belongings in a concealed, innovative and simple way.

Introducing the EverydaySafe™

Chubb safes is proud to present a game-changing security innovation – the EverydaySafe™.

The EverydaySafe™ is a quality product which is designed to be directly integrated into kitchen cabinets, providing homeowners with a safe and conveniently accessible space to store their prized belongings and everyday valuables.



FAST ACCESS

Open your safe in a few seconds via the fingerprint scanner or smartphone app, allowing you to deposit or retrieve your valuables quickly and safely.



CONCEALED

Designed to be built into a range of furniture options, the EverydaySafe™ is hidden to everyone but you and selected users that you authorise.



SHIELDED

Faraday functionality that protects against keyless car theft (relay attacks) and contactless credit card fraud.

HIGH SECURITY

The EverydaySafe™ is designed to provide the highest possible level of security and protection against the burglary of items such as passports, cash, jewellery, watches, credit cards, car keys and any other premium or important items.





Everything you need to know about the EverydaySafe™



WITH AN EVERYDAYSAFE™ IN YOUR HOME – everything is quicker, simpler and more secure. Although the concept of a safe within a home has been around since the 13th century, it can often feel as if the safes we are presented with in the present day still hail from the same era. Safe designs are generally bulky, unattractive and cumbersome to use, and this is why they are stored away in the back of cupboards or under the stairs – rather than where we need them most.

THE EVERYDAYSAFE™ PROVIDES EVERYONE WITH THE OPPORTUNITY to have a sleek, innovative and digitally connected safe built discreetly into their kitchen; providing ease of use and peace of mind. No longer do you need

to concern yourself with losing your keys or hiding your treasured watch in the sock drawer; simply come home, open your discreet safe in a matter of seconds and securely store your everyday and most valued items.

EVERYTHING ABOUT THE EVERYDAYSAFE™ has been designed with the customer in mind – setting out to innovate and revolutionise the way in which people store and protect their most important, valuable and treasured items in the home. This brochure has been designed to tell you everything you need to know about the EverydaySafe™. For example, did you know how the EverydaySafe™ protects against car theft?

SASHA AND ROBERT MOVED INTO THEIR NEW PROPERTY ONCE THEY HEARD AN ADDITION TO THE FAMILY WAS ON THE WAY.

They quickly set about designing their new house to become a home for years to come, and an important part of that was a new kitchen – the centrepiece of the household. During the design phase, their primary focus was on style and convenience, which was why the choice to include an EverydaySafe™ made perfect sense.



“Always knowing where to leave my keys and purse, not worrying about my car on the driveway, and having the peace of mind that my grandmother's jewellery is safe and sound – everything has added convenience and peace of mind”

Sasha & Robert

WHAT DOES THE KITCHEN IN YOUR HOME MEAN TO YOU?

Sasha: “For me, the kitchen is the beating heart of any home, especially ours. It’s often one of the first places you go when you wake up, the last place you leave before heading to the office in the morning, and the first place you come back to when you get home. We also love to cook and hang out in the kitchen – and where I imagine teaching my kids to cook too”

WHAT DID YOU LOOK FOR WHEN DESIGNING YOUR KITCHEN?

Sasha: “We wanted a space that was modern, spacious and stylish – and this of course goes for the room itself, the kitchen unit and the appliances we selected as well. It was important to me that the design and experience of our kitchen wasn’t compromised by the additional items we chose to include – but as the EverydaySafe™ is hidden, this was never an issue. This space turned into the perfect beautiful kitchen that we always imagined, just with a hidden perk that makes our lives a little easier, and a little more secure”.

WHY THEN DID YOU WANT TO HAVE AN EVERYDAYSAFE™ IN YOUR KITCHEN?

Robert: “We had a safe in our previous house, but only after we found out that one of our close friends had been burgled. Although we had it, we didn’t use it enough. It was hard to access, I had it stashed in the back of my cupboard, behind some old jumpers. I was even keeping our passports hidden under the cutlery drawer in the kitchen! When we saw the EverydaySafe™, we realised that this was a stylish solution that

would allow us to keep our most valued items safe, without anyone even knowing that we had a safe in the house”

SO HOW HAVE YOU BEEN FINDING THE EVERYDAYSAFE™?

Sasha: “It’s great – it’s really slotted right into our daily routine and just given us an added sense of security, whether we’re at home or out of the house. As soon as I get home, I swing by the kitchen and quickly open the safe using the hidden fingerprint scanner. Within a couple of seconds I’ve put my car keys and purse away, and I know they’re secure. We also keep our most expensive items of jewellery, watches and things like passports in there – including my grandmother's necklace that she passed down to me. It’s just so good to know that all of these things are safe and sound, just in case anything were ever to happen”

IS THERE ANYTHING THAT YOU FIND MOST USEFUL?

Robert: “Well, I’m a bit of a car enthusiast – and last year I finally had the money saved up to buy the sports car I’ve always dreamed of; a new BMW M5. It’s a fantastic car, I absolutely love it. As well as being big enough for the kids and dog it’s also seriously quick, and it has some cool features like keyless entry; so all I have to do is walk up to it and as long as the keys are in range the doors open! It’s really convenient, but the only issue is that even if your car key is in the house, thieves can actually access the signal, open your car and drive it away before you know it. This actually happened to a friend of mine recently, which is why the fact that the EverydaySafe’s functionalities protect against data theft means that I never have to worry about this happening to me”

This is Chubbsafes

Trusted the world over

Chubbsafes is one of the oldest safes brand in the world. Trusted the world over, Chubbsafes has been providing protection around the globe for people, cash and valuables for almost 200 years.

The Chubbsafes products are well-known and appreciated for their unique combination of robustness, reliability and modern designs. They associate experience in security with technological innovation to create trustworthy products for maximum protection against burglary, fire and explosives. They are rigorously tested by international and independent accreditation bodies to guarantee the best protection available.



Chubbsafes
Trusted the world over.

SECURITY FEATURES

- Built to an EN 14450 – S1 burglary resistance standard. **Construction tested** by Istituto Giordano, Italy **and certified** by ECB-S. Granted SS 304 Domestic Safe “Silver Level” by Sold Secure, UK.
- ECB-S class B and VDS class 2 **certified electronic high security locking unit**.
- **Software & fingerprint sensor tested** independently by Orange Cyberdefence in Malmö (Sweden)
- **Faraday functionality** that protects against keyless car theft and contactless credit card fraud.
- **Secure anchorage** protecting against any removal attempts.



INSTALLATION & OPERATION

- A **dedicated mobile app** that enables users to open and close their safe, add further users and monitor activity.
- A **biometric fingerprint solution** positioned under the safe that provides fast access in under 2 seconds.
- **Simple installation process** requiring a kitchen fitter less than 30 minutes to secure to the kitchen cabinet.
- **Great retrofit capability**, allowing you to install into an existing kitchen or piece of furniture, you just need a power source.



DESIGN & CONSTRUCTION

- Conceptualised in Sweden **and engineered in Germany**.
- 4 mm steel housing with a 4 mm steel front and **reinforced manganese plates**.
- Stainless steel and **precision manufactured** locking bolts.
- **Blum Movento** runner system including soft-close function using Blumotion.
- Standard colour RAL 9010 **pure white** with a smooth finish.



What is Faraday Shield good for?

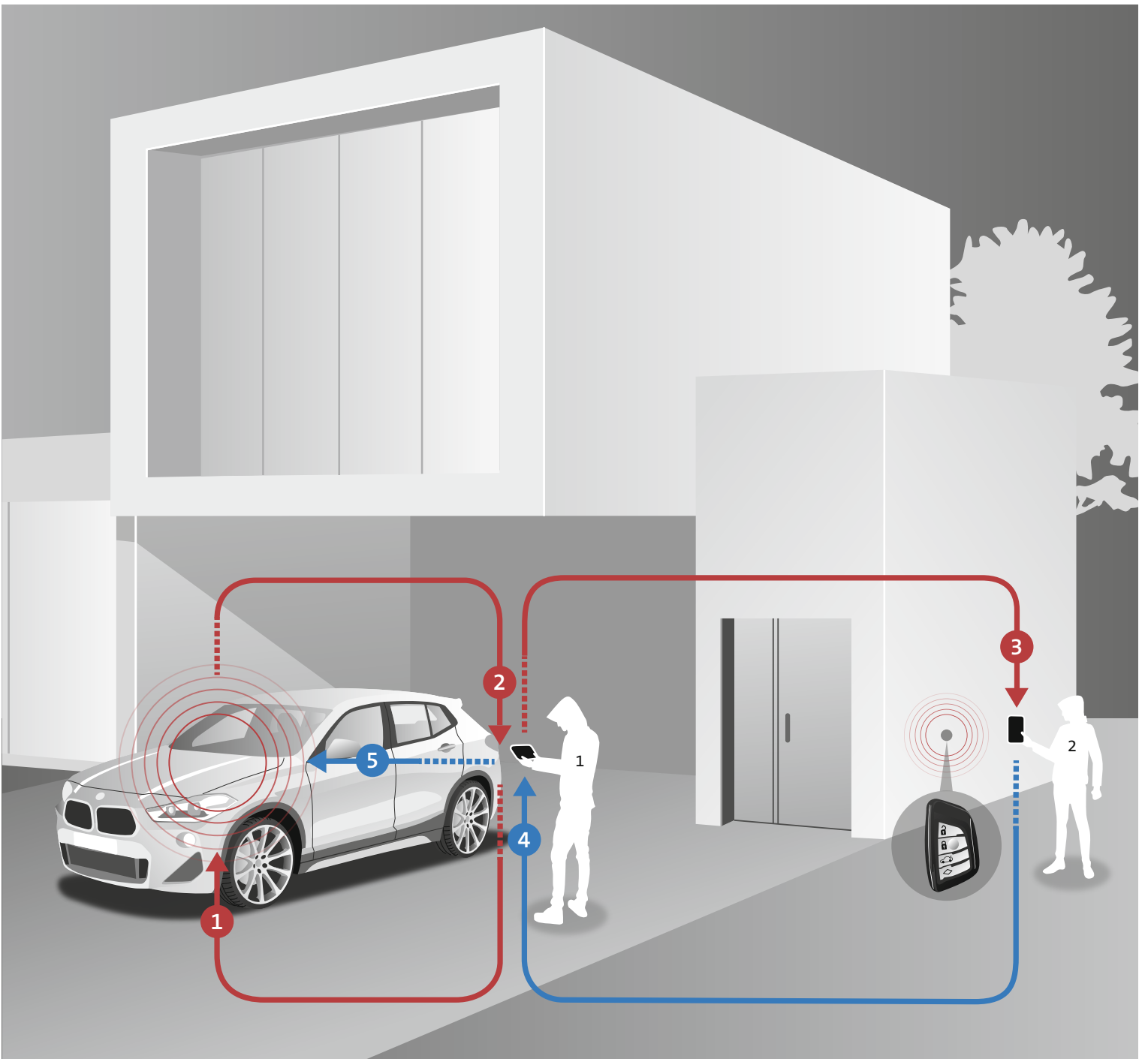
Protect your car keys from cloning

A Faraday Cage, sometimes known as a Faraday Shield, is an enclosure that is used to shield things from electromagnetic fields, automatically blocking any wireless signals such as keyless car cloning devices, as well as wifi and mobile phone signals.



THIS IS KEY CLONING

Keyless cars unlock automatically when their key is physically close to the car. Smart criminals are using relay devices to make car systems believe a key is nearby by cloning its signal. They intercept and then relay the signal from the key using two receiver/transmitters.



1

First thief's transmitter pings the car's locking system, impersonating the key

2

Locking system responds, sending signal that the key is meant to pick up and respond to

3

First thief's transmitter forwards the signal to the other thief near the house

4

His transmitter sends it on to the key fob and then relays back the 'correct' response from the key fob to the first thief's transmitter

5

This signal is then routed to the car's locking system, opens the car and starts the ignition



ENGINEERED IN GERMANY

ENGINEERED IN GERMANY using the Blum Movento and Blumotion system, the EverydaySafe™ provides you with a unique opportunity to design a kitchen that offers your customers a concealed and convenient space to store their prized belongings and everyday valuables.

Benefits of selling the EverydaySafe™

ADDITIONAL REVENUE STREAM

EverydaySafe™ provides an additional source of income that complements rather than competes with the other products you offer

DIFFERENTIATE YOURSELF FROM THE COMPETITION

Selling the EverydaySafe™ you can stand out against your competition when competing to win costumers

RE-ENGAGE WITH PREVIOUS CLIENTS

The EverydaySafe™ can be retrofitted into any kitchen, giving you the ideal opportunity to reconnect and sell to prior customers as well as upsell appliance/kitchen furniture upgrades

INCORPORATE INTO ANY KITCHEN DESIGN

The EverydaySafe™ is available in a variety of file formats including DWG | BIM Object | DXF | RVT | 3DS and SketchUp to ensure you can easily add it to your kitchen design software

INTEGRATES WITH ANY DRAWER SYSTEM

The EverydaySafe™ drawer in a drawer option can be fitted within any Blum, Hettich, Grass or Matrix by Hafele drawer system

STANDARD KITCHEN MEASUREMENTS

The EverydaySafe™ single drawer design fits a standard 600 mm kitchen unit, offering the flexibility to attach any manufacturers drawer front to the front of the safe so it matches the rest of the cabinet

EASY INSTALLATION

Built with the kitchen fitter in mind, EverydaySafe™ takes less than 30 minutes to attach to a kitchen cabinet and comes with a simple to follow installation guide

CUSTOMER & PRODUCT SUPPORT

The Support Team is always on hand to help with any product, installation or logistic queries

The Why's and What's

Benefits of owning the EverydaySafe™

At Chubb safes, we analysed the residential safe market and understood there had been a lack of innovation, imagination and development for a number of years. Current safes weren't suited to peoples' modern lives and needs. Changing threats meant we had to step up our game.

Therefore the EverydaySafe has been designed with the customer in mind. This customer-centric approach led us to develop a solution that compliments a users daily life.





THEFT AND THIEVES

Independent of current statistics, burglaries will always happen. Let us help you minimise the potential fall-out. You can reduce the likelihood that your valuables will be stolen by securing them in an entirely concealed EverydaySafe™. Protect your loved ones, precious items and cars.

WHY HOMEOWNERS NEED AN EVERYDAYSAFE™

- Delivers fast, convenient, digital access to a safe
- Hidden and concealed for maximum protection
- Multi-layered security to safeguard against burglary and car theft
- Undetectable unless activated by a user
- Secure storage solution that fits their daily routine
- Convenient installation with minimal disruption
- Does not alter the style or appearance of the home
- 2-year product guarantee
- Meets Insurance standards for £20K valuables and £2K cash

WHAT HOMEOWNERS CAN DO WITH AN EVERYDAYSAFE™

- Store everyday necessities such as car keys, wallets and watches – ensuring they are always at hand, protected and ready for access
- Hide valuable and treasured items, protecting them against theft or damage
- Prevent toddlers from accessing dangerous small items
- Stop family members from accessing emergency medicine e.g. Epi-Pen
- Securely lock keys to a gun cabinet
- Restrict children's usage of electronic devices
- Easily access passport for business trips
- Safely store watches, rings etc during home improvement projects
- Add additional users, such as their partner or other family members
- Monitor safe usage – who has opened it and when

A process designed for simplicity

Installation

The EverydaySafe™ has been designed to ensure a fast, simple and mess-free installation process. It has been engineered for simple installation in under 30 minutes – with the flexibility to be included in a single drawer, or drawer in drawer solution.

We understand that you may want to dig into the finer technical details for the EverydaySafe™. With this in mind, we have produced an extensive and exhaustive technical manual to provide you with this level of information.



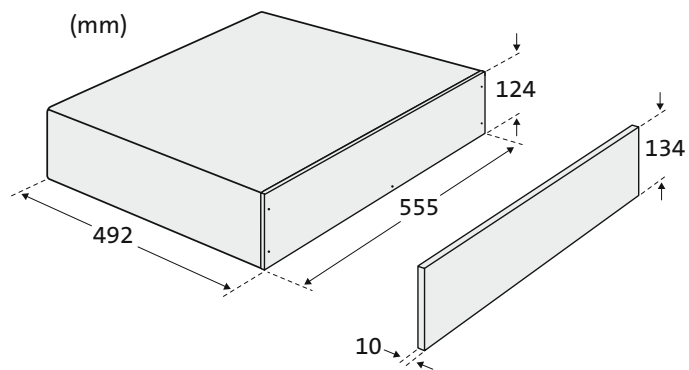
MORE INFORMATION ABOUT THE INSTALLATION IS AVAILABLE AS A BROCHURE AND VIDEO AT WWW.EVERYDAYSAFE.COM

STANDARD KITCHEN MEASUREMENTS

The EverydaySafe™ is designed to fit into any standard 600mm kitchen cabinet, and accommodates 16 mm – 22 mm carcasses.

The minimum inner cabinet dimensions required to install the EverydaySafe™ are:
Drawer in Drawer: W 561 × D 502 × H 134 mm
Single Drawer: W 561 × D 490 × H 134 mm

The weight of the case is 26 kg and the drawer 13 kg

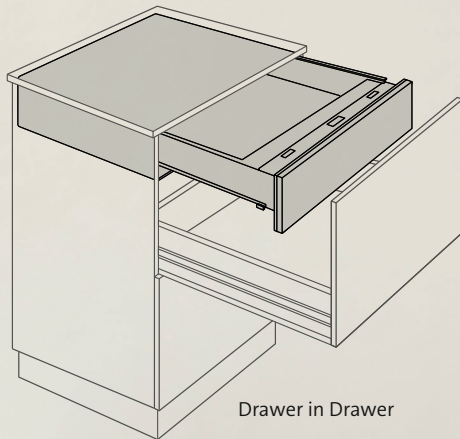


INSTALLATION OPTIONS

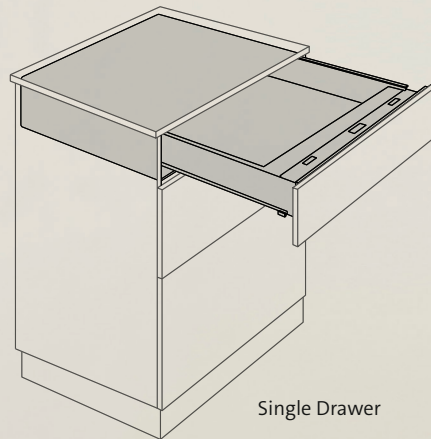
PROVIDING FLEXIBILITY FOR YOU AND YOUR CUSTOMERS VIA TWO INSTALLATION OPTIONS – DRAWER IN DRAWER AND SINGLE DRAWER.

Recognising the variety of styles and configurations of customer kitchens, we have set about to ensure that installing the EverydaySafe™ is as accommodating as possible, for both resellers and customers.

With this in mind, the EverydaySafe™ solution and accompanying Blum Movento runner system is able to be installed in either a drawer in drawer or single drawer. Please see the full installation guide for more details on how this is specifically achieved.



Drawer in Drawer



Single Drawer



Packaging and transport

Presentation and professionalism are two values that permeate the EverydaySafe™, from the work put in on our factory floor to the moment it arrives at a customer's property. We ensure that all EverydaySafe's arrive clearly marked and identifiable due the high quality packaging stickers – and we have outlined a few further guidelines to ensure this premium feel is evident from the moment customer's take delivery.



TO ENSURE THE SAFE TRANSPORTATION AND ARRIVAL OF EVERYDAYSAFE™, PLEASE TAKE NOTE OF THE FOLLOWING:

- This is a high performance safe, as such it's heavy and **should be secured during transport**
- Please be aware that items – such as other appliances – should **not be stored or placed on top** of the EverydaySafe™
- Overall **packaging dimensions** are W 600 × D 550 × H 200 mm
- The **total weight** per package is 46 kg

WE ARE HERE TO HELP. REACH OUT TO US VIA OUR SUPPORT CHANNELS

SALES & LOGISTICS

EverydaySafe™ Sales

Email: sales.everydaysafe@gunnebo.com

UK Activations Manager

Shane McKay

Email: shane.mckay@gunnebo.com

Phone: +44 7973 931663

Nordic Activations Manager

Christina Stoltz

Email: christina.stoltz@gunnebo.com

Phone: +46 72 394 39 36

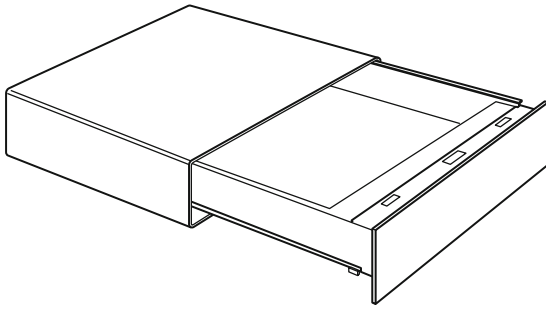
CUSTOMER & PRODUCT SUPPORT

Email: support.everydaysafe@gunnebo.com

Phone: +44 1902 904030

Specifications

Global article code: P000001374



MAIN FEATURES

App connectivity & user management

Yes

Protection

Burglary resistance – built to a certified EN 14450 construction – S1 level, Faraday; SS 304 Domestic Safe Sold Secure Silver level

Country of origin

Made in Germany

Installation

Easy mounting into 60cm kitchen cabinets

Operation

Simple, fast yet safe access by means of fingerprint sensor

Colour

Standard colour RAL 9010 pure white with a smooth finish

Standard inlay

Grey felt mat

PHYSICAL PROPERTIES

Overall packaging dimensions (WxDxH)
600 x 550 x 200 mm

Case dimensions (WxDxH)
555 x 492 x 124 mm

Wooden front dimensions (WxDxH)
560 x 10 x 134 mm

Support flanges dimensions (WxDxH)
380 x 2 x 130 mm

Drawer inner dimensions (WxDxH)
515 x 392 x 80 mm

Inner volume
16 litres

Case weight
26 kg

Drawer weight
13 kg

Case material
4mm housing with 4mm stainless steel front; reinforced with manganese plates

MECHANICAL PROPERTIES & FUNCTIONALITY

Soft close function
Yes (Blumotion)

Automatic lock when closing
Yes

Durability testing
over 25.000 life cycles (opening & closing)

Time to open
under 2 seconds

Runner System
Yes (Blum Movento)

ELECTRONICAL COMPONENTS & CONNECTIONS

Power lead to mains

230V/ 9v, 1,2m cord length, connected at bottom rear of case

Power plug

EU or UK

Connector between case and drawer

to be connected using screw driver after securing case and sliding drawer into it

Fingerprint sensor

Capacitive sensor; IPx7; Verification time: 0.4 seconds

In the event of a power cut

9v battery can be connected for short time use at bottom of case by user, data is not erased

Reset function

Press the red button on the casing under the drawer

SECURITY FEATURES

Safety standards

built to a EN 14450 – S1 standard; Sold Secure Silver level

Locks

Prime locks certified to ECB-S Class B and VDS Class 2

Faraday protection

protection against data theft at a distance > 10cm

Code and key encryption

storage in a safe hardware unit (HSM)

Software & fingerprint sensor testing

Orange Cyberdefence in Malmö (Sweden)

Fire protection

No

APP FUNCTIONS & FEATURES

Connectivity

Wi-Fi and Bluetooth

Users per safe

2 (free version) up to 50 (subscription version)

Alternative user interface

Yes

User permission rights storage

Yes

Users administration & monitoring

Yes

Factory default settings

Free opening by any fingerprint

Activity log

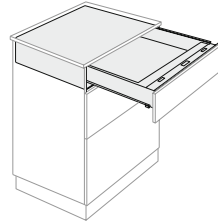
2 weeks activity log (free version) up to 24 months (subscription version)

Item inventory and activity log

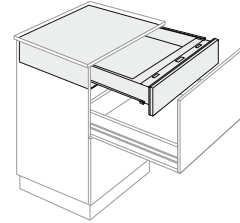
subscription version only

INSTALLATION OPTIONS

Single drawer undercounter



Drawer-in-drawer

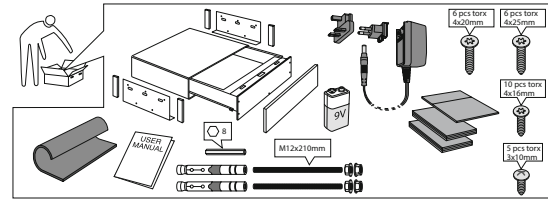


The mounted wooden front is supposed to be flush-fitted with the cabinet

INSTALLATION STEPS

Unpacking

without turning box upside down, extract from the box, cutting the corners if needed

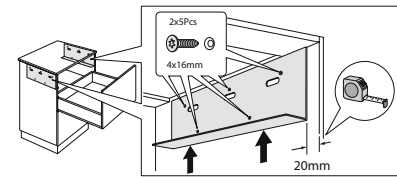
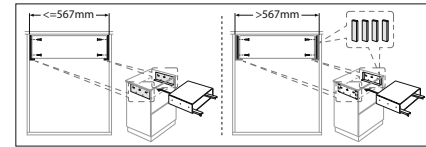


Preparing

place appliance on flat surface and extract drawer from case (2 people needed)

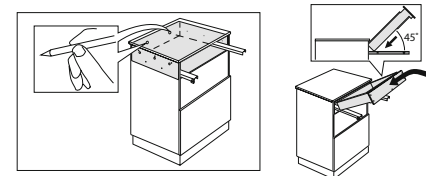
Fixing of case to cabinet side panels

via x2 support flanges screwed onto the side panels (20 mm from edge for drawer-in-drawer)

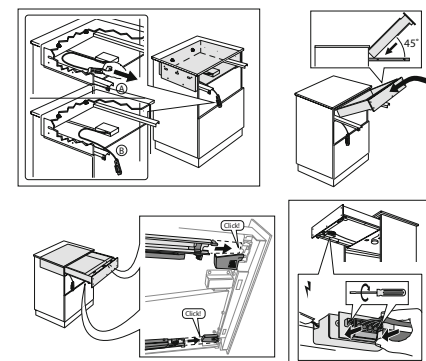


Drilling and anchoring to kitchen wall

via x2 12mm adjustable fixing bolts, once the case has been pushed onto the supports



Connecting



The EverydaySafe™



LEARN MORE HERE

Scan this QR code with your smartphone
or visit www.everydaysafe.com



BY **GUNNEBO**®

Chubb's safes
Trusted the world over.